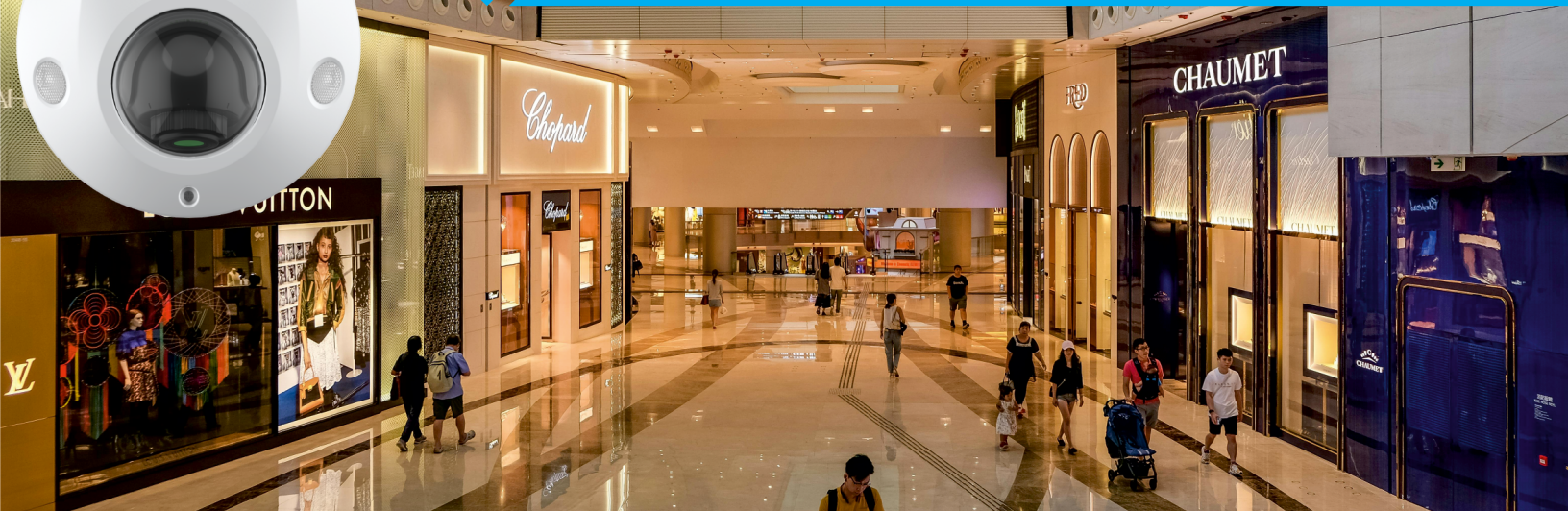




**AM-DM2064-FMA2**  
**2MP Mini Dome Camera**



**Superior Engineering Design & Sensational Image Quality**

**AM-DM2064-FMA2**

**2MP Mini Dome Camera**



H.265+ VIDEO COMPRESSION



SMART CODEC



SMART IR



3D NOISE REDUCTION



VOLTAGE PROTECTION



12VCD/  
PoE 802.af

**SUPER WDR**



**Features :**

- Metal Housing
- Up to 1920x1080@25fps
- S+265/H.265/H.264
- Min. illumination Color: 0.002Lux@F1.6
- Smart IR, IR Range: 30m
- Audio I/O 1/1, Alarm I/O 1/1
- Support tripwire, perimeter
- Human/Vehicle Classification
- Built-in Mic, SD Card Slot
- Operating Conditions -30°C~60°C, 0~95% RH
- POE, IP67

## Technical Specifications

Model No	AM-DM2064-FMA2
<b>Camera</b>	
Image Sensor	1/2.8" CMOS
Signal System	PAL/NTSC
Min. Illumination	Color:0.002Lux@(F1.6,AGC ON),B/W:0Lux with IR
Shutter Time	1s to 1/100,000s
Day & Night	Dual IR Cut Filter with Auto Switch
WDR	120dB
Angle Adjustment	pan: -30° to 30°, tilt: 0° to 75°, rotate: 0° to 360°
<b>Lens</b>	
Lens Type	Fixed
Focus	2.8mm
Lens Mount	M12
Aperture	F1.6,Fixed
FOV	Horizontal field of view:101.7°/85.2°, Vertical field of view:57.4°/44.9°, Vertical field of view:114.2°/96.1°
<b>Illuminator</b>	
IR LEDs	2
IR Range	Up to 30m
Wavelength	850nm
<b>Compression Standard</b>	
Video Compression	S+265/H.265/H.264/Motion JPEG
Video Bit Rate	32Kbps~8Mbps
Audio Compression	G.711A/G.711U/ADPCM_D/AAC_LC
Audio Bit Rate	8K,48Kbps
<b>Image</b>	
Max. Resolution	1920x1080
Main Stream	PAL:25fps(1920x1080,1280x720,704x576,640x480) NTSC:30fps(1920x1080,1280x720,704x480,640x480)
Sub Stream	PAL:25fps(704x576,704x288,640x360,352x288) NTSC:30fps(704x480,704x240,640x360,352x240)
Third Stream	PAL: 25fps(704x576, 704x288, 352x288) NTSC: 30fps(704x480, 704x240, 352x240)
Image Setting	Saturation,brightness,contrast,sharpness,adjustable by client software or web browser
Image Enhancement	BLC/3D DNR/HLC
ROI	8
OSD	16x16,32x32,48x48,adaptable size,Letters Such as Week,Date,Time,Total 3 Regions
Picture Overlay	Yes
Privacy Mask	Yes,4 regions
Smart Defog	Yes
<b>Feature</b>	
Alarm Trigger	Motion Detection,Mask Alarm,IP Address Conflict
Video Analytics	Tripwire,Perimeter

## Technical Specifications

Model No	AM-DM2064-FMA2
<b>Network</b>	
ANR	Yes, auto store video in SD card when NVR disconnected, and upload video to NVR when resumed connection
Protocols	HTTP,HTTPS,TCP/IP,UDP,UPnP,ICMP,IGMP,SNMP,DHCP,DNS,DDNS,Easy DDNS,NTP,SMTP,802.1X,QoS,IPv4,IPv6,PPPOE,SSH,Unicast,Multicast,RTCP,AR
System Compatibility	ONVIF(PROFILE S/T/G)
Remote Connection	≤2
Web Version	Web6
<b>Interface</b>	
Communication Interface	1 RJ45 10M/ 100M self adaptive Ethernet port
Audio I/O	1/1
Alarm I/O	1/1
Reset Button	Yes
On-board storage	Built-in Micro SD card slot, up to 512 GB
<b>General</b>	
Web Client Language	English
Operating Conditions	-40°C-65°C, 0~95% RH
Power Supply	DC 12V±25%, PoE (802.3af)
Power Consumption	MAX: 6.5W(12V) MAX: 8W(POE)
Protection	IP67
Dimensions	110×110x60mm
Net Weight	0.4kg
Dimensions of single packing case	138×138x110mm
Gross Weight	0.5kg
Volume of packing box	24

### DIMENSIONS (Unit: mm)

